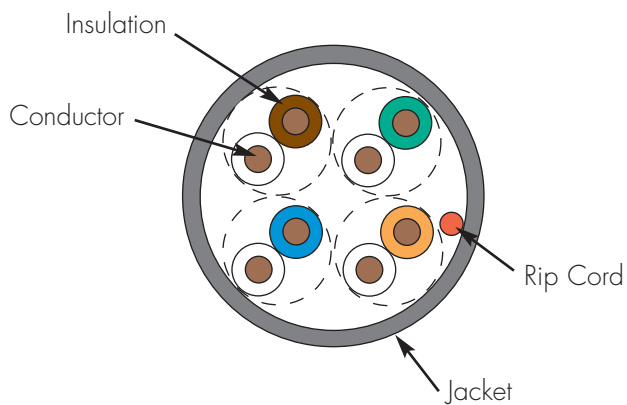
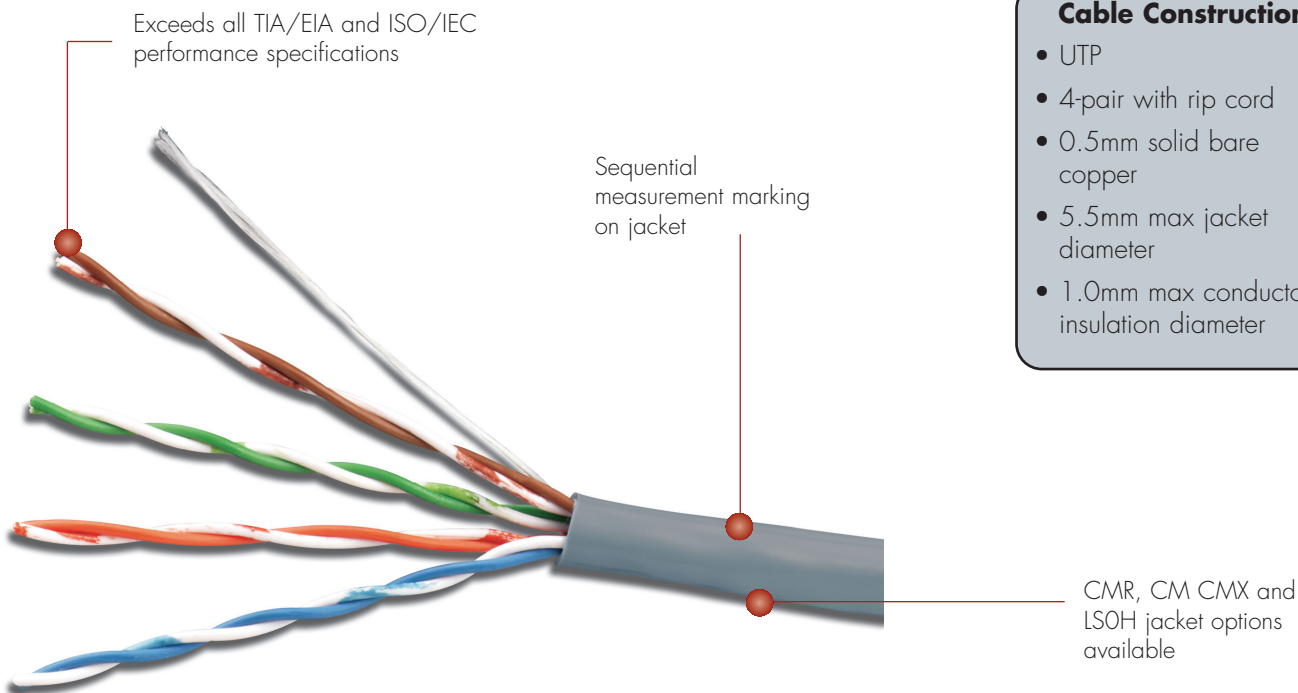


# PREMIUM 5e<sup>®</sup> UTP CABLE

Siemon premium 5e UTP cable perfectly complements the performance of our category 5e outlets. Siemon cable exceeds all TIA/EIA and ISO/IEC requirements for category 5e/class D transmission performance. Utilising Siemon cable is the ideal way to ensure optimum channel performance and is essential for a complete end-to-end warranted system.



CABLE — INTERNATIONAL



*Cable packaged in a Reellex box (305m) to protect product during shipping and facilitate tangle-free installation*

- ### Cable Construction
- UTP
  - 4-pair with rip cord
  - 0.5mm solid bare copper
  - 5.5mm max jacket diameter
  - 1.0mm max conductor insulation diameter

- ### Compliance
- ISO/IEC 11801:2002 (category 5e)
  - ANSI/TIA/EIA-568-B.2
  - IEC 61156-5:2002
  - LSOH: IEC 60332-1, IEC 60754, and IEC 61034
  - UL CMX
  - UL CM: IEC 60332-1
  - UL CMR and CSA FT4

# PRODUCT INFORMATION



## ELECTRICAL SPECIFICATIONS

DC Resistance	<9.38 Ω/100m
DC Resistance Unbalance	5%
Mutual Capacitance	5.6 nF/100m
Capacitance Unbalance	<330 pF/100m
Characteristic Impedance (ohms)	1-100 MHz: 100 ± 15% 100-350 MHz: 100 ± 22%
NVP	70%
TCL	40-10 x log(f/dB)
Delay Skew	≤40ns

## PHYSICAL PROPERTIES

	LSOH	CMX/CM/CMR
Pulling Tension (max)	110N	110N
Bend Radius (min)	22mm	25mm
Installation Temperature	0 to 60°C	0 to 60°C
Storage Temperature	-20 to 75°C	-20 to 75°C
Operating Temperature	-20 to 60°C	-20 to 60°C

## TRANSMISSION PERFORMANCE

■ TIA/EIA & ISO/IEC

□ SIEMON TYPICAL

Frequency (MHz)	Insertion Loss (dB)		NEXT (dB)*		PS NEXT (dB)		ACR (dB)		PSACR (dB)		ACR-F (dB)		PS ACR-F (dB)		Return Loss (dB)		Propagation Delay (ns)	
	100m	300m	100m	300m	100m	300m	100m	300m	100m	300m	100m	300m	100m	300m	100m	300m	100m	300m
1.0	2.1	1.9	65.3	79.3	62.3	72.3	63.2	77.4	60.2	70.4	63.8	84.8	60.8	78.8	20.0	27.0	570	545
4.0	4.1	3.7	56.3	70.0	53.3	63.3	52.2	66.6	49.2	59.6	51.8	72.8	48.8	66.8	23.0	32.0	552	527
10.0	6.5	5.8	50.3	64.3	47.3	57.3	43.8	58.5	40.8	51.5	43.8	64.8	40.8	58.8	25.0	32.0	545	520
16.0	8.3	7.4	47.2	61.2	44.2	54.2	39.0	53.8	36.0	46.8	39.7	60.7	36.7	54.7	25.0	32.0	543	518
20.0	9.3	8.3	45.8	59.8	42.8	52.8	36.5	51.5	33.5	44.5	37.8	58.8	34.8	52.8	25.0	32.0	542	517
31.25	11.7	10.5	42.9	56.9	39.9	49.9	31.1	46.4	28.1	39.4	33.9	54.9	30.9	48.9	23.6	30.0	540	515
62.5	17.0	15.0	38.4	52.4	35.4	45.4	21.4	37.4	18.4	30.4	27.9	48.9	24.9	42.9	21.5	30.0	539	514
100.0	22.0	19.3	35.3	49.3	32.3	42.3	13.3	30.0	10.3	23.0	23.8	44.8	20.8	38.8	20.1	30.0	538	513
160.0*	28.6	25.1	32.2	46.2	29.2	39.2	3.7	21.1	0.7	14.1	19.7	40.7	16.7	34.7	18.7	28.0	537	512
200.0*	32.4	28.1	30.8	44.8	27.8	37.8	-1.6	16.7	-4.6	9.7	17.8	38.8	14.8	32.8	18.0	27.0	537	512
250.0*	36.9	31.4	29.3	43.3	26.3	36.3	-7.5	11.9	-10.5	4.9	15.8	36.8	12.8	30.8	17.3	26.0	536	511
300.0*	41.0	34.5	28.1	42.1	25.1	35.1	-12.8	7.6	-15.8	0.6	14.3	35.3	11.3	29.3	16.8	25.0	536	511
350.0*	44.9	39.4	27.1	41.1	24.1	34.1	-17.7	1.7	-20.7	-5.3	12.9	33.9	9.9	27.9	16.3	24.0	536	511

\*Values above industry requirements are for information only

All performance based on 100 metres.

## Premium 5e<sup>®</sup> UTP 4-Pair Solid Cable:

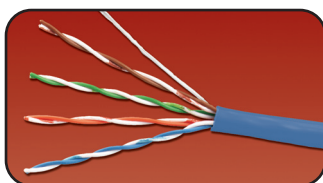
9C5X4-E2 .....PVC (CMX, IEC 60332-1), Grey Jacket, 305m Reelex

9C5M4-E2 .....PVC (CM, IEC 60332-1), Gray Jacket, 305m Reelex

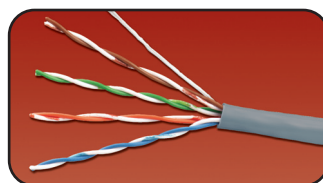
9C5R4-E2 .....PVC (CMR, CSA FT4), Blue Jacket, 305m Reelex

9C5L4-E2 .....LSOH (IEC 60332-1), Violet Jacket, 305m Reelex

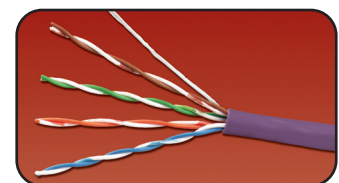
Other cable lengths also available: Add "-5CR" for 500m Reel



9C5R4-E2



9C5X4-E2/9C5M4-E2



9C5L4-E2

### For related product information request Spec Sheet(s):

- MAX<sup>®</sup> 5e Modules (PROD-SS-MPD)
- MC<sup>®</sup> 5e Modular Patch Cords (PROD-SS-MC5)
- HD<sup>®</sup> 5 Patch Panels (PROD-SS-HD5)
- MAX Patch Panels (PROD-SS-MXP)
- S110<sup>®</sup> Connection System (PROD-SS-S10)
- S110 Patch Plugs (PROD-SS-10P)

Because we are continuously improving our products, Siemon reserves the right to change specifications and availability without prior notice.

MAX<sup>®</sup>, HD<sup>®</sup>, S110<sup>®</sup>, MC<sup>®</sup> and Premium 5e<sup>®</sup> are trademarks of Siemon

**Siemon — EMEA HQ & UK**  
United Kingdom  
Tel: +44 (0) 1932 571771

**Siemon — France**  
Paris  
Tel: +33 1 46 46 11 85

**Siemon — Deutschland**  
Frankfurt  
Tel: +49 (0) 69 97168 184

**Siemon — Italia**  
Milano  
Tel: +39 (02) 64 672 209