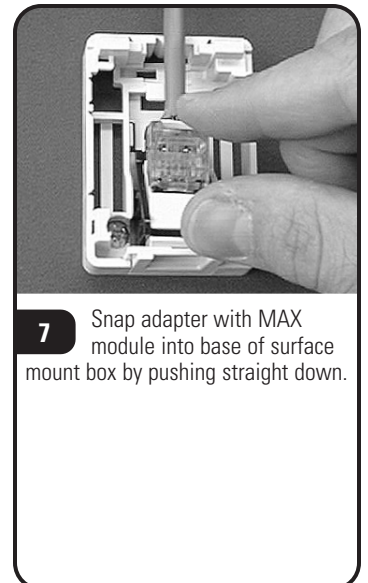
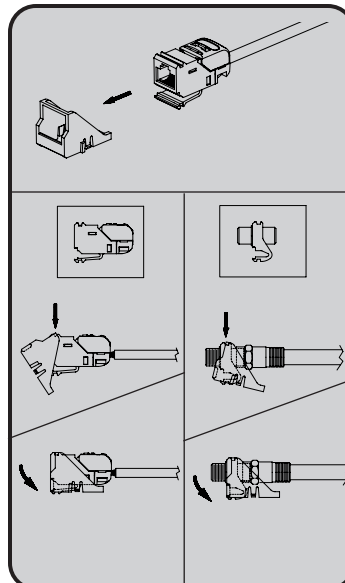
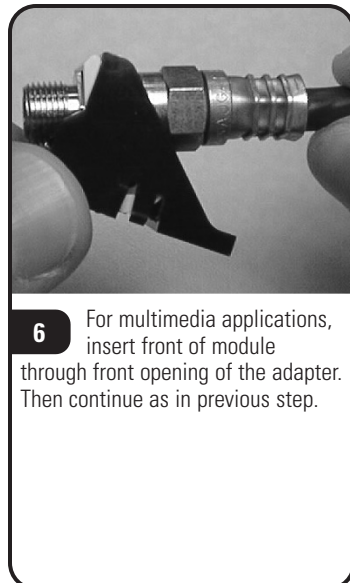
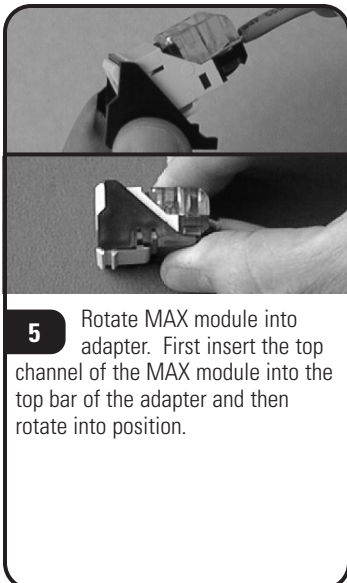
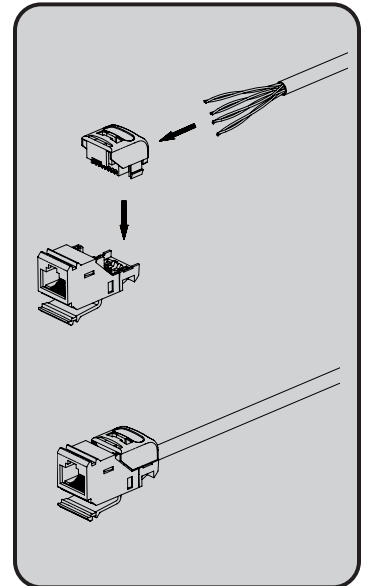
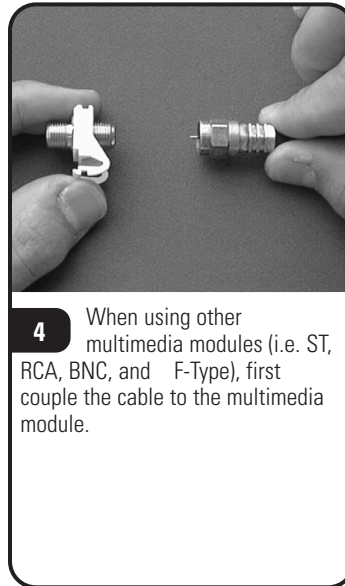
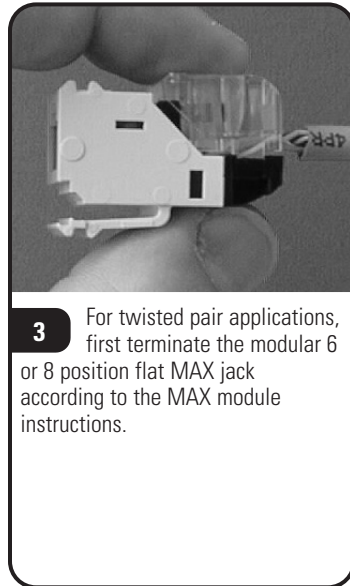
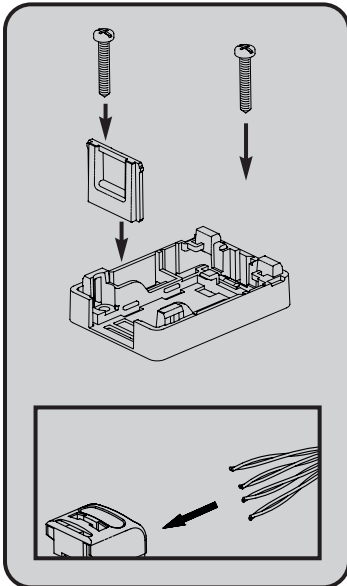
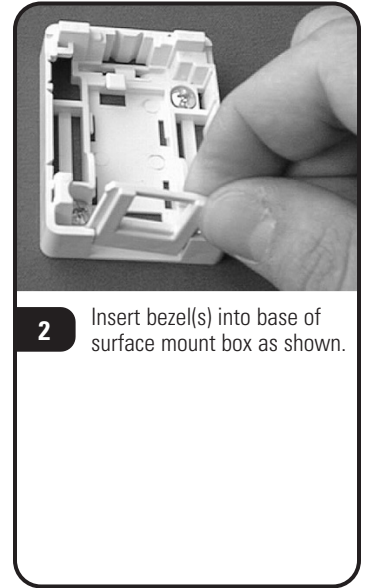
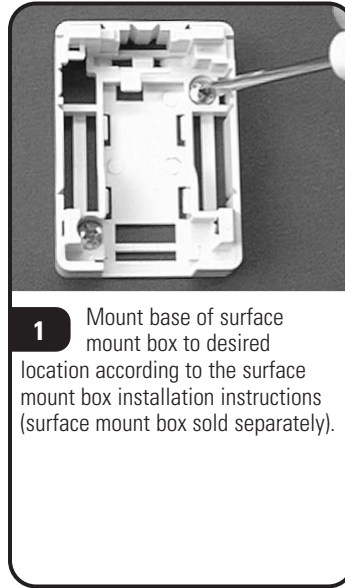
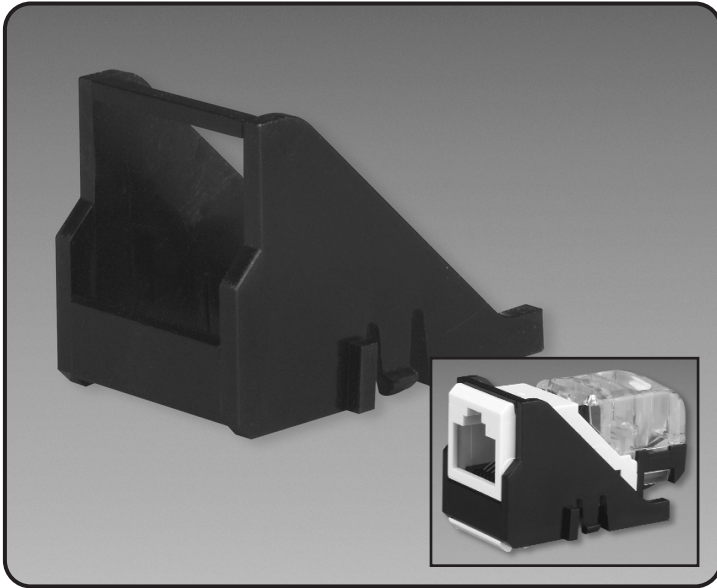
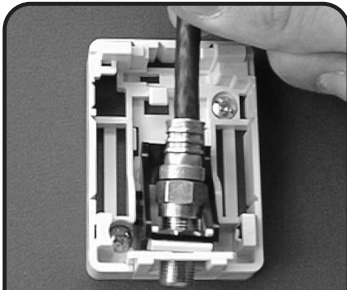


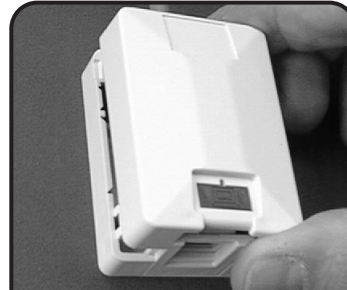
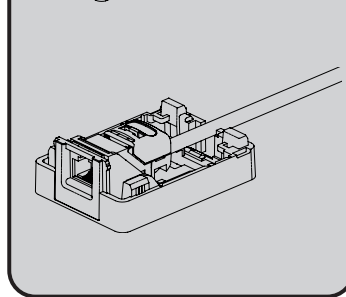
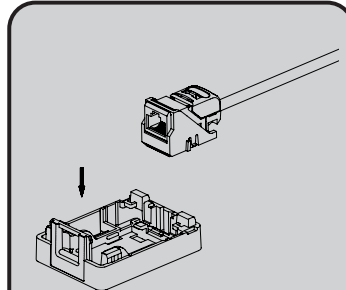
MAX[®] Module Surface Mount Adapter Instructions



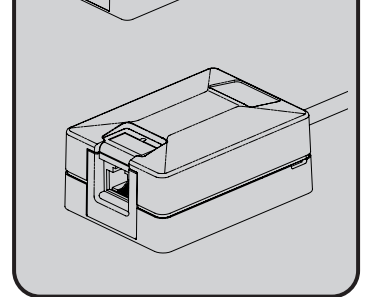
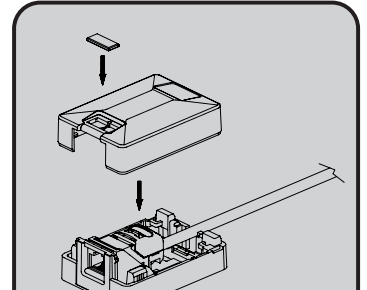
MAX Module Surface Mount Adapter Instructions



8 For multimedia applications, rotate connector through bezel opening first, then snap straight down into base of surface mount box.



9 Snap icons or blank tabs into the space provided on the surface mount box cover and snap cover onto base.



To assist safe installations, comply with the following:

- A. Use caution when installing or modifying telecommunications circuits.
- B. Never touch uninsulated wire terminals unless the circuit has been disconnected.
- C. Never install this device in a wet location.
- D. Never install wiring during a lightning storm.

Communication Circuit
Accessory Listed 5755



Global Headquarters

Watertown, Connecticut USA
Tel: (1) 866-548-5814

For a complete listing of our global offices visit our web site

