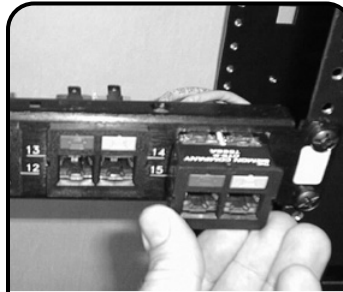
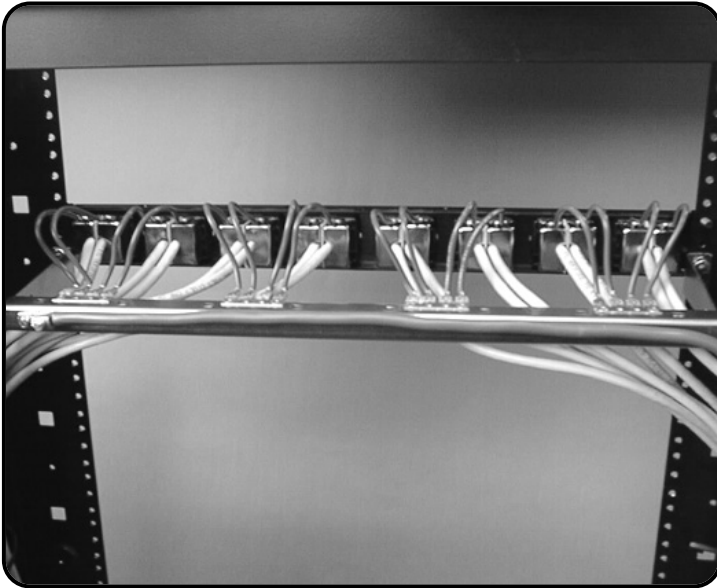
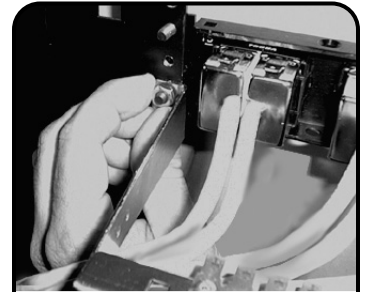


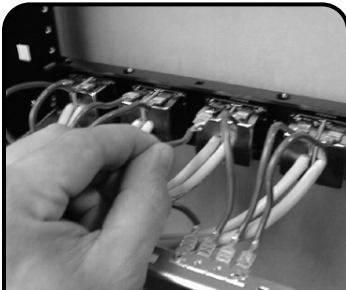
# ScTP Grounding Bracket Instructions (ScTP-GRD-1RMS)



**1** Mount the CT® patch panel to the front of the equipment rack with the hardware provided and insert screened (ScTP) couplers. Terminate ScTP couplers according to instructions provided with couplers.



**2** Mount ScTP-GRD-1RMS grounding bracket to the backside of the CT® patch panel by sliding the mounting holes of the ground bar over the exposed portion of the patch panel's mounting screws and attach with (2) 12/24 hex nuts provided.



**3** Attach the 102mm (4 in.) long jumpers from each CT® coupler ground tab to the ground bracket.



**4** Using the ground lug mounted to the ground bracket, attach the #6 AWG ground wire (not included) to the Telecommunications Grounding Busbar (TGB).

## To assist safe installations, comply with the following:

- A. Use caution when installing or modifying telecommunications circuits.
- B. Never touch uninsulated wire terminals unless the circuit has been disconnected.
- C. Never install this device in a wet location.
- D. Never install wiring during a lightning storm.

**Global Headquarters**  
Watertown, Connecticut USA  
Tel: (1) 866-548-5814

For a complete listing of our global offices visit our web site



[www.siemon.com](http://www.siemon.com)