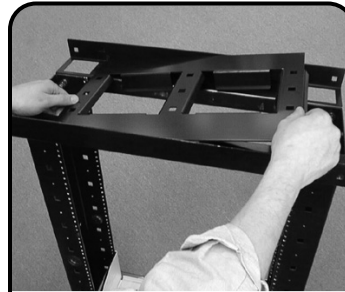
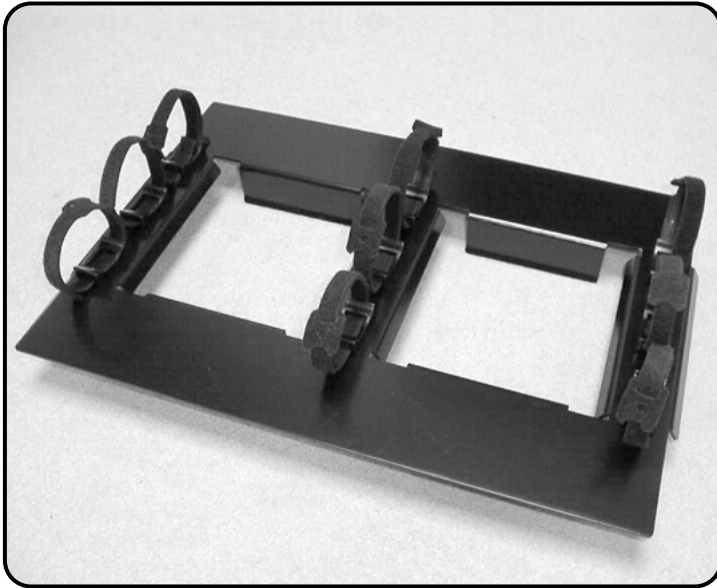
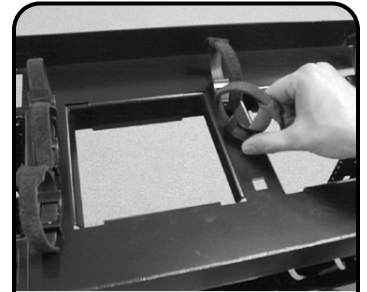


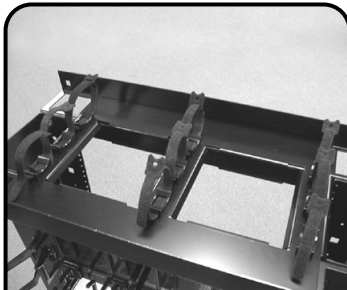
# Rack Top Cable Tray (RS-TRAY) Instructions



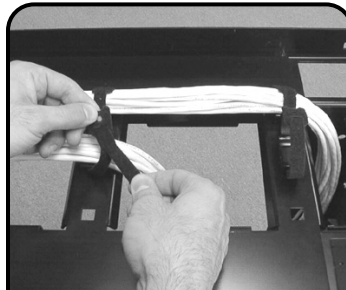
**1** Place cable tray on top of rack between upper rack support brackets and press tray into place. Cable tray is self aligning between vertical rack channels for proper fit.



**2** Insert and rotate hook and loop managers (included) into square holes provided on tray.



**3** Product shown assembled on top of rack.



**4** Route cable onto tray and fasten with hook and loop managers. Tray allows routing of cable along three separate horizontal pathways via three rows of hook and loop managers. Cable bundles can then be routed down the middle and/or sides of tray (as shown).

**Global Headquarters**  
Watertown, Connecticut USA  
Tel: (1) 866-548-5814

For a complete listing of our global offices visit our web site

 **SIEMON**  
[www.siemon.com](http://www.siemon.com)