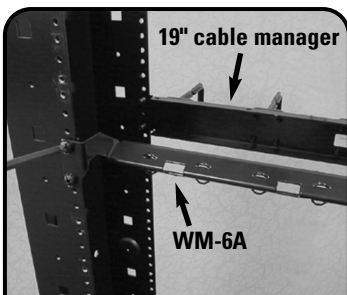
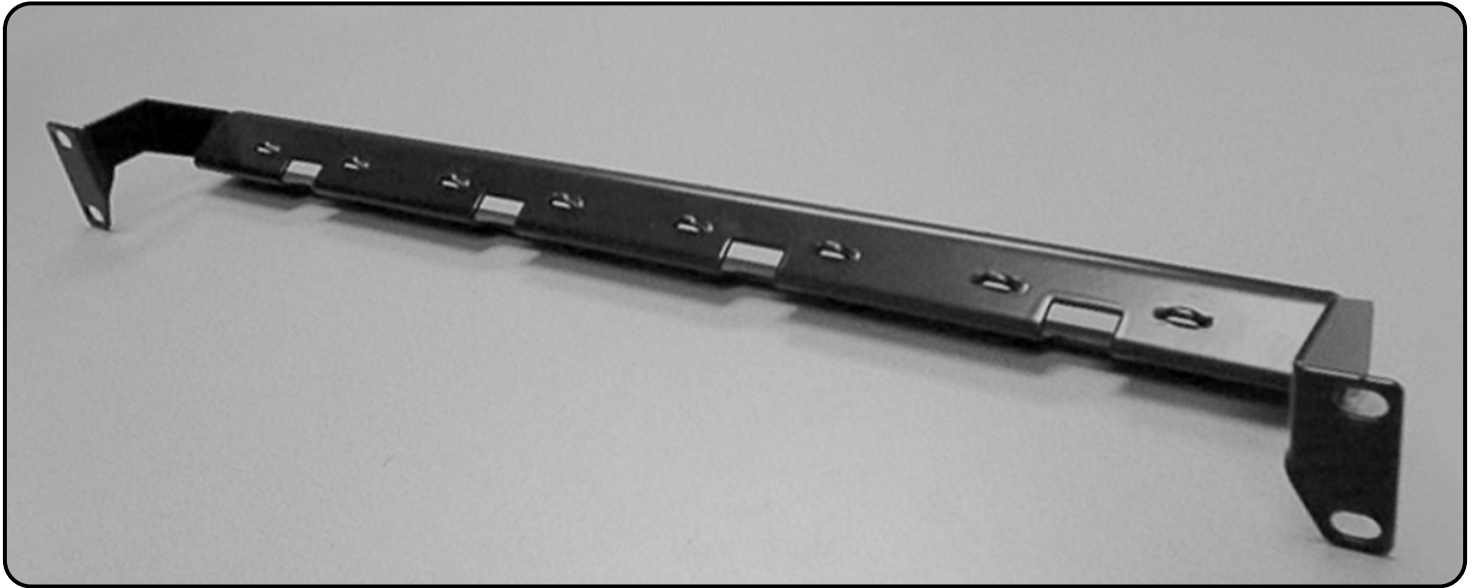
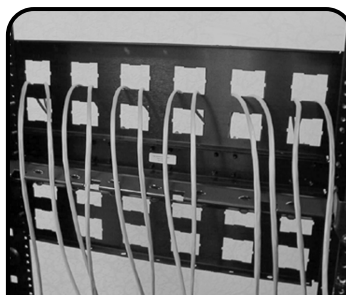


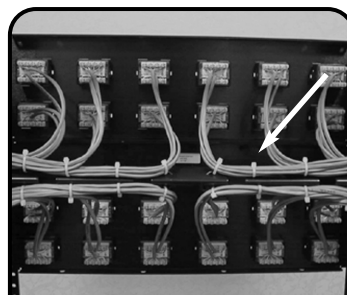
# Cable Management Bar Instructions



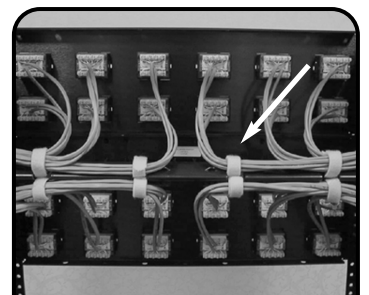
**1** Mount the wire management bar to the rear of a 19 inch cable management rack with the included mounting screws and washers. If possible, position the wire management bar directly behind a front mount 19 inch cable manager.



**2** Mount patch panel(s) to the front of the cable management rack. Route cables above and below the wire management bar.



**3** After completing terminations, secure cables to the wire management bar with cable ties...



**4** or Siemon VCM (P/N: RS-VCM) series hook and loop cable managers.  
*Note: It is recommended to route one half of the cables to the right and the other half to the left of the rack as shown.*

**Global Headquarters**  
Watertown, Connecticut USA  
Tel: (1) 866-548-5814

For a complete listing of our global offices visit our web site

