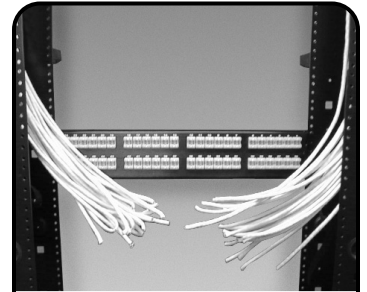


HD5®, HD® 6 & 10G 6™ HD Universal Patch Panel Instructions



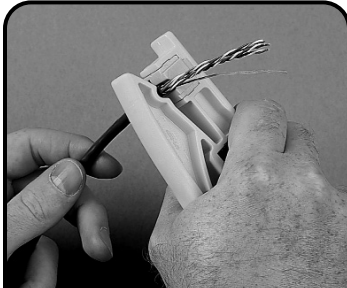
1 Using the #12-24 machine screws and washers provided, mount the patch panel to the desired position of a 19 inch relay rack or equivalent.

Note: HD6 patch panels represented in photos.



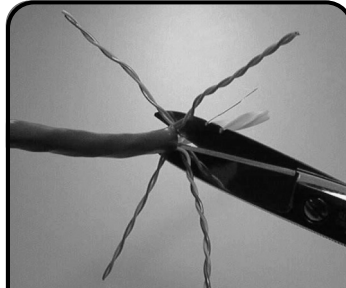
2 For ease of installation route half of the cables being terminated to the panel from the left, and the other half from the right.

Ensure that enough slack is provided to properly secure cables to the cable manager when the cable manager is attached.



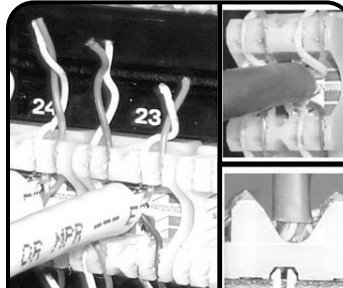
3 Strip back approximately 50mm (2 in.) of cable jacket using Siemon AllPrep™ tool (P/N: CPT-RGTP) or equivalent.

Note: Although round cable is shown, flat cables may also be used



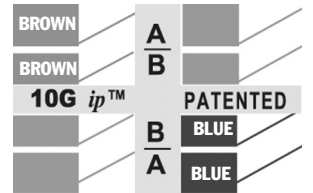
4 Fan out cables based on desired wiring scheme. Cut the rip cord or separator (if present) as close as possible to the jacket.

Note: Be careful not to nick conductors. There is no need to untwist pairs, (except for bonded pairs) since the 310™ block includes features to facilitate wire lacing.



5a Following the color coded label for T568A/B wiring schemes, center cable jacket within 310 block as shown. Lace all pairs by pressing firmly into position. Optionally, two pairs can be terminated first to help secure cable before lacing final two pairs.

Note: Begin at the bottom corner of the panel where the cables feed from, and work towards the middle.

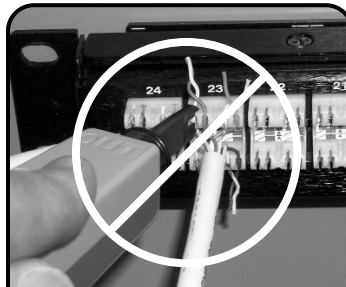


5b FOR 10G 6 HD PATCH PANELS ONLY:

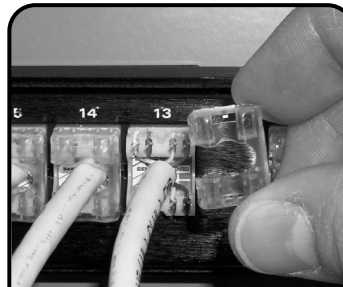
Follow the color-coded label for T568A/B wiring schemes, starting with the brown pair on the top left IDC positions and ending with the blue pair on the bottom right positions. Refer to step 5a for proper lacing practices and options.



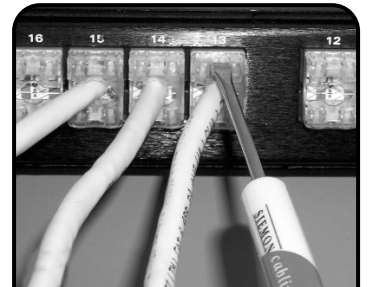
6a Correct termination: Terminate using Siemon S814 termination tool or equivalent. Tool is in-line with 310 block. Cable jacket is centered down between 310 blocks.



6b Incorrect Termination: Termination tool is not perpendicular to the 310 block. Cable jacket is not within 310 termination posts.



7 Required Step Slide termination cap over the cable and snap into place prior to testing.

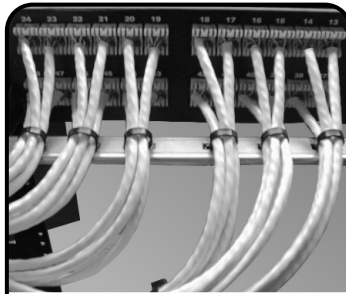
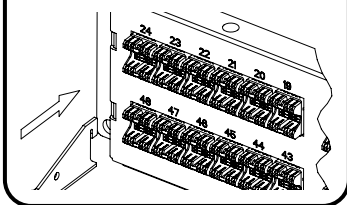


8 Cap removal can be accomplished by prying with a small screwdriver placed in slot as shown.

HD5, HD 6 & 10G 6 HD Universal Patch Panel Instructions

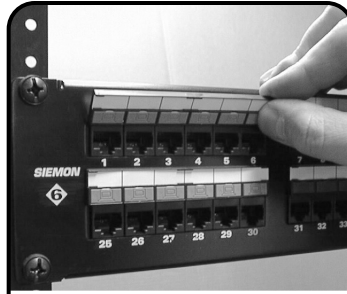


9 After cable termination, the rear cable manager should be attached to the panel.



10 The cables should be secured to the cable management bracket with the supplied cable ties or with VCM series cable managers.

Note: Cable ties should be loosely cinched so as not to deform the bundle or cable jacket.



11 Peel paper from adhesive backing of icon/label holder, locate bottom lip of icon/label holder to top edge of jacks of HD5 patch panel and press firmly.



12 Slide paper designation label into top of holder and snap icons into icon pockets.

Note: Laser printable labels can be ordered separately. (P/N HD5-ICON6-LBL or HD5-ICON8-LBL). Visit our web site or contact our Technical Support Department for labeling software.

To assist safe installations, comply with the following:

- A. Use caution when installing or modifying telecommunications circuits.
- B. Never touch uninsulated wire terminals unless the circuit has been disconnected.
- C. Never install this device in or near a wet location.
- D. Never install wiring during a lightning storm.

Global Headquarters

Watertown, Connecticut USA
Tel: (1) 866-548-5814

For a complete listing of our global offices visit our web site

