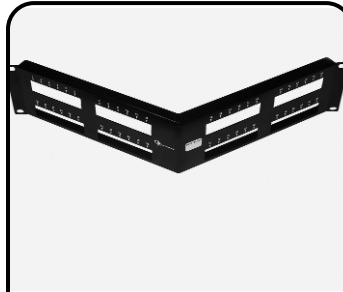


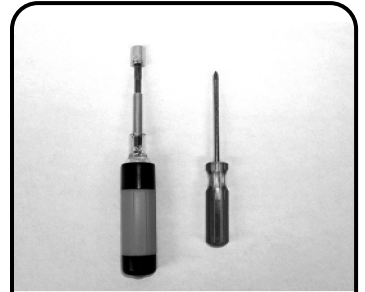
Angled MAX[®] Patch Panel Instructions



Description

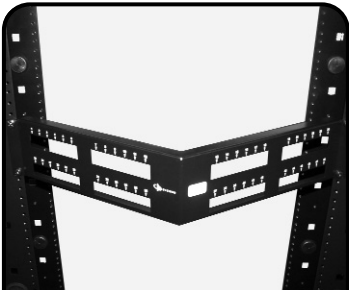
The angled MAX patch panel is designed to support high-density applications without the need for horizontal cable management.

Note: 48-port panel shown throughout.



Required Tools

- Philips screwdriver.
- 7/16-inch nut driver or equivalent for optional rear manager.



1 Using the #12-24 screws provided, mount the patch panel to the desired position on a 19" relay rack or equivalent.



2 Route cables to their appropriate location and cut them to length for termination. Provide sufficient amount of slack when routing to the patch panel.



3 Terminate flat MAX modules and install into patch panel according to the instructions that accompanied the MAX modules.

Note: Only flat MAX modules can be used on the angled MAX patch panels.

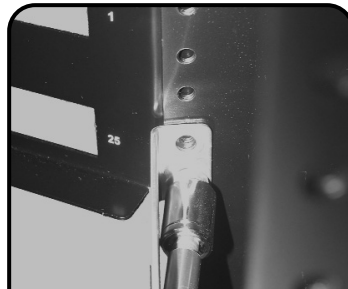


4 Install color-coded icons (as shown above) or hinged doors provided with modules into area above MAX modules to secure modules into panel. See MAX module instructions for additional details.



Optional Manager

The WM-BK is a rear manager that is available as an option for the angled MAX panels.



1a Install the WM-BK using a 7/16-inch nut driver or equivalent and the 12-24 nuts that are supplied with the rear manager. Thread the nuts on the back of the patch panel mounting screws.

Angled MAX[®] Patch Panel Instructions

To assist safe installations, comply with the following:

- A. Use caution when installing or modifying telecommunications circuits.
- B. Never touch uninsulated wire terminals unless the circuit has been disconnected.
- C. Never install this device in a wet location.
- D. Never install wiring during a lightning storm.



Global Headquarters
Watertown, Connecticut USA
Tel: (1) 866-548-5814

For a complete listing of our global offices visit our web site

