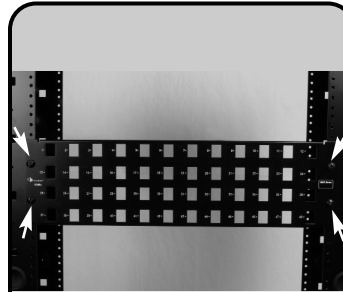
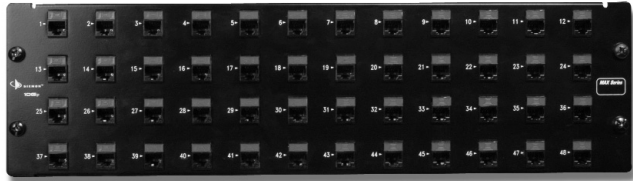
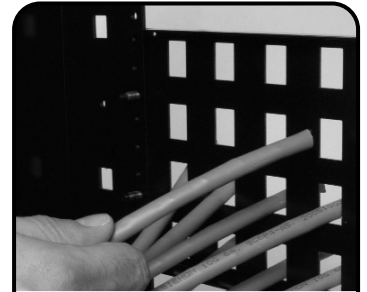


# 10G 6A MAX<sup>®</sup> Patch Panel Instructions



**1** Using the #12-24 machine screws and washers provided, mount the patch panel to the desired position on a 19" rack or equivalent.



**2** Cables can be placed into port openings in panel to aid in organizing cable location before module termination

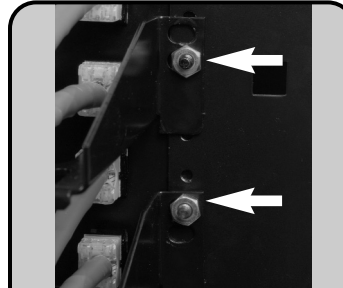


**3** Terminate 10G 6A MAX modules and install into patch panel according to the MAX module instructions.

*Note: Flat modules are recommended for patch panels and angled modules are recommended for the work area.*



**4** Install color coded icons (as shown above) or optional hinged doors into area above MAX modules to secure modules into panel. (See MAX module instructions for additional details.)



**5** Attach the rear cable manager(s) to the back of the mounted panel as shown. A 7/16" wrench will be needed to tighten provided hex nuts.

*Note: For 48-port panel use proper hole alignment shown in photo*

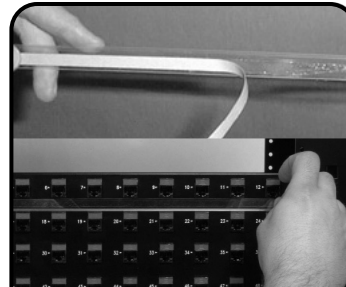


**6** Dress terminated cables onto rear manager with cable ties provided or Siemon VCM-series cable managers (available separately).

*Note: Do not over tighten cable ties. Cable ties should not deform the cable jacket.*



**7** After all cables have been secured to the rear cable manager(s), the cables can be dressed and secured to the rack as desired



**8** Install optional label holder by removing adhesive cover and adhering to front of patch panel.

*Note: For 24-port version, label holder is placed above each row. For 48-port version, label holder is installed between rows as shown above.*



**9** Insert paper label into label holder by separating the plastic label holder and inserting paper label between layers of the plastic holder.

# 10G 6A MAX Patch Panel Instructions

**To assist safe installations, comply with the following:**

- A. Use caution when installing or modifying telecommunications circuits.
- B. Never touch uninsulated wire terminals unless the circuit has been disconnected.
- C. Never install this device in or near a wet location.
- D. Never install wiring during a lightning storm.



**Global Headquarters**  
Watertown, Connecticut USA  
Tel: (1) 866-548-5814

For a complete listing of our global offices visit our web site

