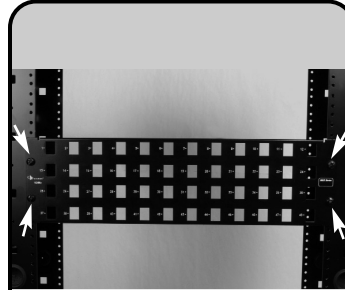
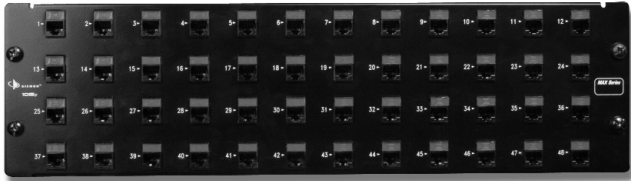
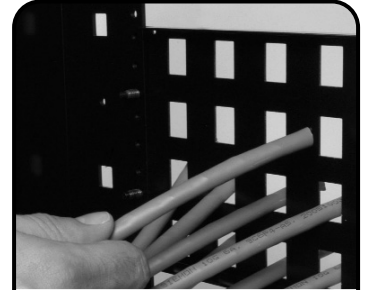


10G 6A MAX[®] Patch Panel Instructions



1 Using the #12-24 machine screws and washers provided, mount the patch panel to the desired position on a 19" rack or equivalent.



2 Cables can be placed into port openings in panel to aid in organizing cable location before module termination

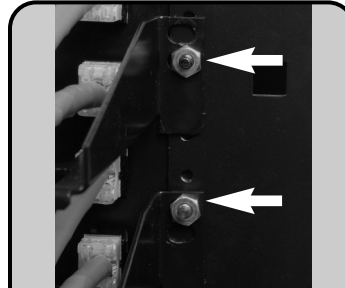


3 Terminate 10G 6A MAX modules and install into patch panel according to the MAX module instructions.

Note: Flat modules are recommended for patch panels and angled modules are recommended for the work area.



4 Install color coded icons (as shown above) or optional hinged doors into area above MAX modules to secure modules into panel. (See MAX module instructions for additional details.)



5 Attach the rear cable manager(s) to the back of the mounted panel as shown. A 7/16" wrench will be needed to tighten provided hex nuts.

Note: For 48-port panel use proper hole alignment shown in photo

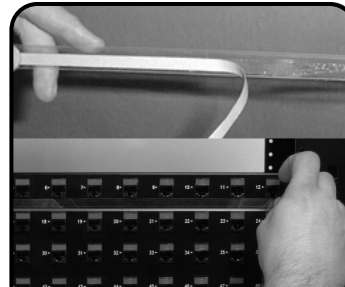


6 Dress terminated cables onto rear manager with cable ties provided or Siemon VCM-series cable managers (available separately).

Note: Do not over tighten cable ties. Cable ties should not deform the cable jacket.

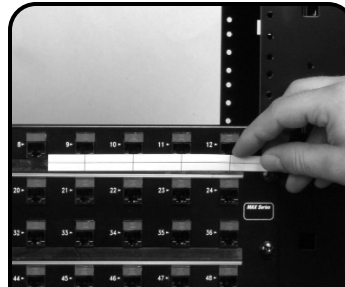


7 After all cables have been secured to the rear cable manager(s), the cables can be dressed and secured to the rack as desired



8 Install optional label holder by removing adhesive cover and adhering to front of patch panel.

Note: For 24-port version, label holder is placed above each row. For 48-port version, label holder is installed between rows as shown above.



9 Insert paper label into label holder by separating the plastic label holder and inserting paper label between layers of the plastic holder.

10G 6A MAX Patch Panel Instructions

To assist safe installations, comply with the following:

- A. Use caution when installing or modifying telecommunications circuits.
- B. Never touch uninsulated wire terminals unless the circuit has been disconnected.
- C. Never install this device in or near a wet location.
- D. Never install wiring during a lightning storm.



Global Headquarters
Watertown, Connecticut USA
Tel: (1) 866-548-5814

For a complete listing of our global offices visit our web site

